



Revised March, 22 2023

INSTALLATION, FINISHING, AND MAINTENANCE INSTRUCTIONS FOR:

Eastern pine, Western pine, and Upland Oak Wood Block Flooring, with A-106 Black and Clear Sealer, D1261-2 Latex Black Sealer, and SB 2772 Urethane finishes. For industrial, commercial and institutional use. Other species available on request.

! PLEASE READ THE ENTIRE SPECIFICATION BEFORE STARTING THE INSTALLATION.

Manufacture

The blocks may be manufactured from air-seasoned or kiln dried Eastern Pine, Western Pine, or Upland (red) Oak lumber, meeting the standards of the American Society for Testing and Materials D1031-81.

Blocks shall be solid $\frac{3}{4}$ " depth minimum, 1", 1 $\frac{1}{4}$ ", 1 $\frac{1}{2}$ ", 2", 2 $\frac{1}{2}$ ", 3" or 4" in depth, and in face sizes of 3" x 3", 4" x 4", 3" x 6", 4" x 6" (all nominal dimension). Permissible variations from specified dimensions shall not exceed $\frac{1}{16}$ " in depth and $\frac{1}{8}$ " in width.

Season checks in the blocks shall not be considered defects.

The blocks may be treated with Bardac 2280 in a petroleum solution to no less than 3 lbs. retention per cubic foot of wood, Conosol, Linseed Oil, or they may be untreated.

They shall be manufactured and installed in strict accordance with the following specification and under the direction of Kaswell Flooring Systems authorized representative.

Installation

For acclimation purposes to insure maximum results of finished products, all wood block shall be stored at the job site in the room/area to be installed, either in palletized form or loose-scattered if possible (see photo below), for a period of from three to ten days prior to installation.



NOTE: Length of acclimation period may be adjusted at the discretion of the installing contractor and is based upon atmospheric conditions at the time of year. In any event, the temperature of the room and the building must be uniformly maintained at not less than 65 Degrees Fahrenheit from before the first block delivery and through acclimation as well as during and after the installation. (Temporary heating units such as space heaters, etc. are not acceptable). The maximum relative humidity at any time shall not exceed 60%. Adequate overhead lighting shall be provided and maintained by others.

The blocks should be installed on a thoroughly cured concrete slab or carefully constructed plywood base (exactly the depth below the finished floor level corresponding with the depth of the block used). The concrete base must be smooth and level, and contain no ridges, waves or projections that would provide an uneven surface for the blocks. The plywood base must be level and solid, and be fastened properly to the underlayment with screw-type nails.

The base shall be cleaned thoroughly of dirt, construction mortar, etc., and/or other debris, by the General Contractor. Apply Bostiks Urethane Adhesive, Kaswell's 2705 Adhesive, or approved equal to the concrete or plywood sub-floor at a rate approximately 40 sq. ft. per gallon using a 1/4" notched trowel.

The blocks shall then be placed in the mastic with the end-grain showing on the surface. Where blocks are to meet all walls, columns, machine pads, etc., install 3/4" wide pre-molded cork expansion joint or asphalt saturated fiberboard material unless base moldings would cover a void around the perimeter. We recommend at least a 3/4" void.

The rows of blocks shall be kept straight and parallel, and joints should be broken by a lap of at least one-inch for all lap joint patterns. At the end of each course, the last piece of block to be installed shall be no smaller than one-inch. (Other block patterns are available and must be heretofore noted as required).



*Pivot Centre, Cleveland, Ohio
Previously Astrop Manufacturing*

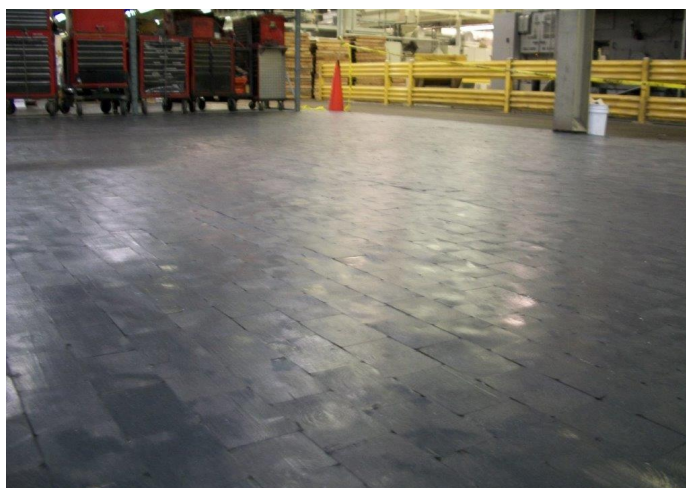
FILING AND FINISHING

After the blocks have been installed, they should be allowed to further acclimate for at least 1-2 days. The blocks could then be sanded (optional), making use of drum sanders and disc sanders using #3-1/2 grit open coat sandpaper. The sanding might consist of 4 to 8 cuts depending on the chosen finish. We recommended the first 4 cuts be made across the rows of blocks, and a second 4 cuts (if made) completed in the same direction as the rows. We suggest saving some wood flour generated in the drum bag. It might be effectively used later.

NOTE: Request a copy of our "Filling Block Flooring" article.

NOTE: Sanding might include a disc sander to remove fiber pull if finished with clear coatings.

The surface may then be coated with either Kaswell A-106 Black Sealer (solve-based, SB 2772 Black Sealer (water-based), Kaswell D-1261-2 Latex Black Sealer, or ebony oil stain.



New Installation Pine Blocks w/D-1261-2 Latex Black Sealer

FILLING

Granulated cork filler, silica sand and wood flour may be used for A-106 Black Sealer and SB 2772 Black Sealer. D-1261-2 Latex Sealer is first used as a sealer and a filler. Between coats you may choose to fill remaining voids between blocks with sand before applying the additional application to create a near 100% filled floor (usually 3 coats).

NOTE: Because of the possibility of wide variations in working conditions, the season of the year, the condition of the blocks when first delivered (i.e. moisture content); deviations and adjustments in acclimation and installation schedules and procedures may be required. Decisions for these specification adjustments should be made by qualified wood flooring contractors. Though Kaswell Flooring Systems cannot accept responsibility for results of installations made by others, our technical department is always available to answer any questions before, during, and after the installation. On-site Kaswell supervisory is available.

Requests for substitutions of materials or deviations of installation procedures by installing contractors shall be made in writing and directed to the Architect, Engineer or Owner involved in the quality and performance of the finished work.

If there are any questions or concerns, please do not hesitate to contact us before or during installation and finishing. Call or e-mail for technical support. Kaswell Flooring Systems cannot be responsible for results of installations made by others.

We reserve the right to change specifications without notice.



*Industrial Pine Block Flooring,
General Electric*



Industrial creosote treated pine blocks, circ 1940



Industrial Pine Block, circ 1950



Squeegee Machine for coating application

MAINTENANCE FOR KASWELL INDUSTRIAL WOOD BLOCK FLOORING

To protect your investment, and to ensure that your Kaswell Flooring System provides years of lasting service we offer the following recommendations for maintenance.

Under no circumstances should water be used for maintenance. Routine cleaning is best accomplished with a wire brush, scrapers, scarification equipment, and brooms. To "dress up" older surfaces consider our A106 Black Sealer, engineered to bond to older and contaminated surfaces.

Maintenance is important. Please call or e-mail us regarding your flooring and your needs.



Pivot Centre, Cleveland, Ohio

KASWELL FLOORING

Maintenance tips:

1. Use sweeping compound/speedy dry products to absorb oil and water spills.
2. Maintain filled joints between blocks to protect against the development of loose blocks
3. Wipe spills promptly.
4. Use walk off mats at entrance doors to minimize tracking of factory generated dirt.
5. Re-apply finish (A-106) as required.
6. D-1261-2 latex black sealer should not be used to recoat older wood block surfaces, but only for the installation of new block flooring.
7. SB772 water base urethane products require light screening before application.
8. Call or e-mail Kaswell with questions.



*Pivot Centre (close up), Cleveland Ohio
Southern Yellow Pine Blocks, sanded, finished with A106 Clear
Sealer, w/cork expansion joint on the left side*

KASWELL LIMITED WARRANTY

Seller warrants for a period of two years from date of delivery that Kaswell flooring is free from defects, which makes the flooring not fit for use for which they are normally intended. Seller's only obligation during this warranty period is, at its sole option, to either repair, replace, refund or credit the purchase price of the flooring, or part thereof, found to be so defective. At the conclusion of this warranty period, Seller shall be under no further obligation whatsoever. This warranty is void in the event of negligence, abuse, abnormal usage, misuse, accidents, improper installation, improper maintenance, or any circumstances or conduct beyond the control of the Seller, most particularly job-site conditions. Seller is not liable for consequential damages arising out of or in connection with the sale or use of Kaswell wood flooring including, but not limited to, all labor and/or material charges or loss of income or profit relating to the goods in any way whatsoever.

CONDITIONS OF SALE

All pricing is per sq. ft. or surface measure with no milling or cutting waste figured.

All orders are subject to availability of stock for prompt delivery.

Special orders are non-cancelable and non-refundable.

A 15% restocking and handling charge is applicable on all authorized returns.



*Squeegee Machine application
of A-106 Black Sealer*



Squeegee Machine application of hot coal tar pitch on a
wood block street, circa 1900